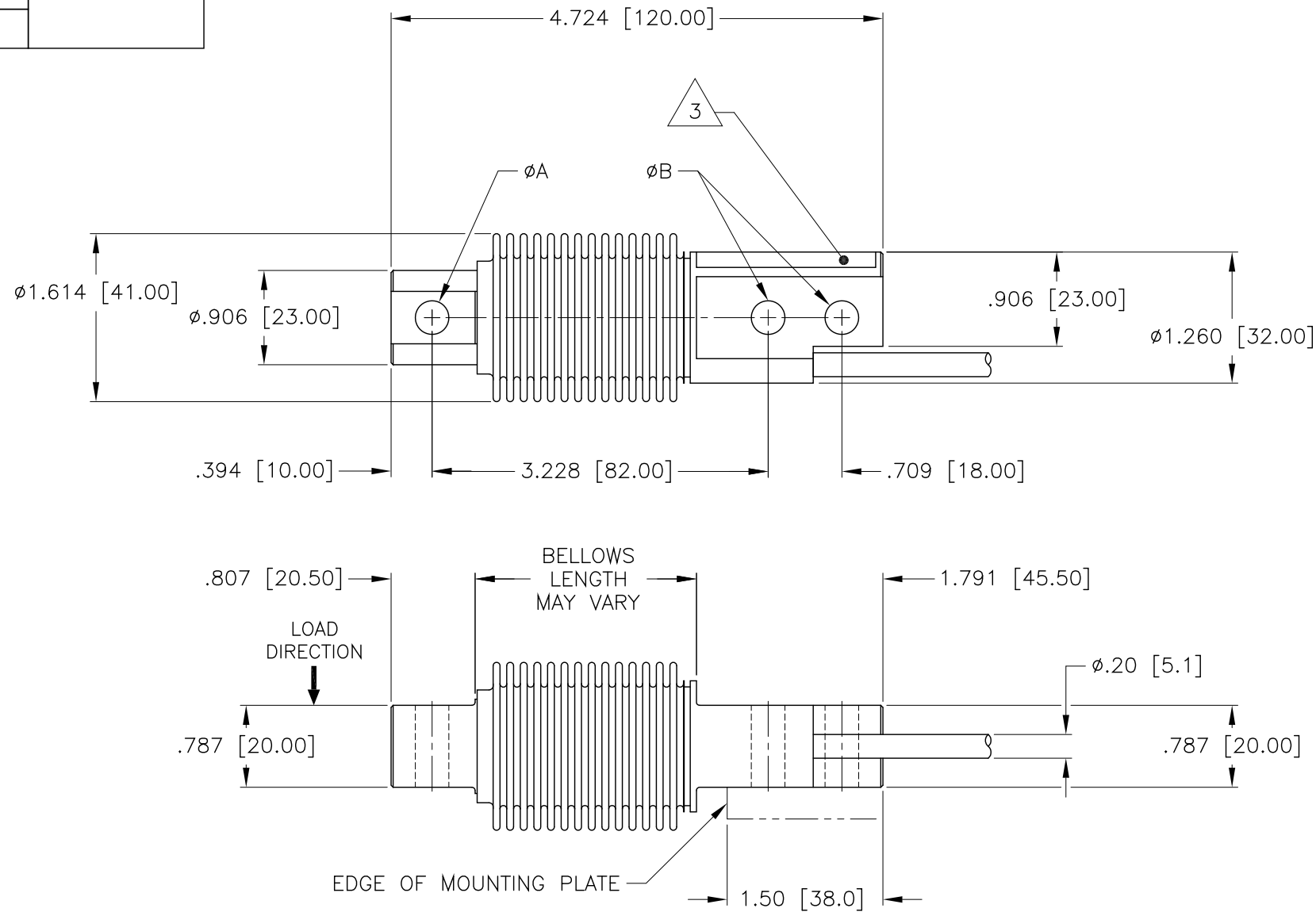


MODEL NUMBER	CAPACITY LBS [KG]	ØA	ØB	THD TORQUE	CABLE LENGTH FT [M]
HI HBB01-22	22 LB [10KG]	Ø.320 [8.2MM]	Ø.320 [8.2MM]	18 LB-FT [25NM]	10FT [3M]
HI HBB01-44	44 LB [20KG]				
HI HBB01-110	110 LB [50KG]				
HI HBB01-220	220 LB [100KG]				
HI HBB01-440	440 LB [200KG]				
HI HBB01-550	550 LB [250KG]	Ø.413 [10.5MM]	Ø.320 [8.2MM]	25 LB-FT [35NM]	
HI HBB01-1.1K	1.1 KLB [500KG]				

TOLERANCES: ±0.01 [0.3] UNLESS OTHERWISE STATED

REV.	ECO/DDC	DESCRIPTION	DATE	DRAFT	CHECK	APV'D
A	----	RELEASED FOR PRODUCTION.	01-31-97	R.B.	P.W.	T.K.
B	10572	REVISED PER ECN.	02-17-10	V.J.C.	C.B.	V.J.C.
C	10999	REVISED PER ECN.	07-07-11	V.J.C.	D.F.D.	V.J.C.
D	11685	REVISED PER ECN.	05-05-15	V.J.C.	L.E.G.	V.J.C.



9. SEE SHEET 2 FOR FULL SCALE 2 DIMENSIONAL DROP-IN CAD FILE VIEWS.

8. LOAD SENSOR OPERATING TEMPERATURE RATING IS -40°C TO +80°C. USAGE OF LOAD SENSOR AT TEMPERATURES BELOW -40°C REQUIRES THAT THE LOAD SENSOR AND CABLE BE TEMPERATURE CONTROLLED.

7. LOAD SENSOR IS STAINLESS STEEL.

6. CABLE IS SHIELDED, 6 CONDUCTOR. CABLE SHIELD IS FLOATING. SEE TABLE FOR CABLE LENGTHS.

5. C2 WIRE COLOR CODE FLAG LABEL IS LOCATED APPROXIMATELY 10 INCHES [254MM] FROM END OF CABLE.

EXCITATION +	RED
EXCITATION -	BLACK
SIGNAL +	GREEN
SIGNAL -	WHITE
C2 +	GRAY
C2 -	VIOLET
SHIELD	YELLOW

4. CABLE WIRE ENDS ARE STRIPPED BACK 0.5 INCHES [12.7MM] AND TINNED. CABLE JACKET IS STRIPPED BACK APPROXIMATELY 5 INCHES [127MM].

3. LOCATION OF MODEL/SERIAL NUMBER LABEL.

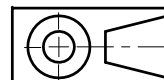
2. THIS DRAWING IS SUBJECT TO CHANGE WITHOUT NOTICE.

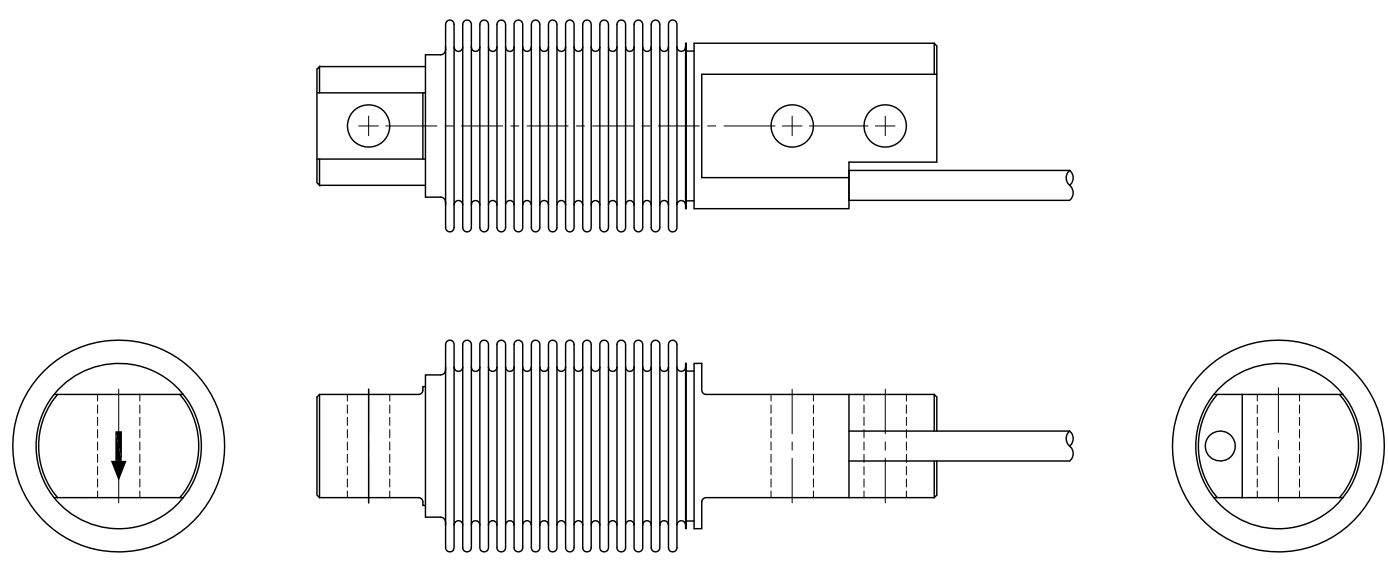
1. RATED OUTPUT: 2mV/V ±0.1%.

NOTES: UNLESS OTHERWISE SPECIFIED

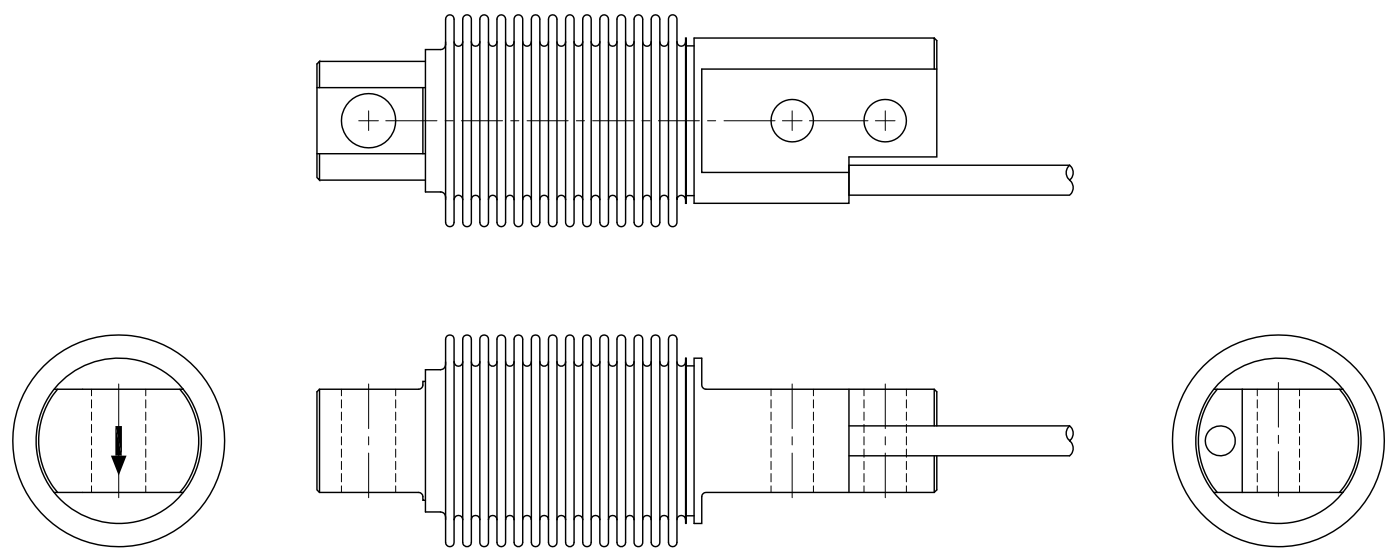
**PROPRIETARY NOTICE**  
 ALL DATA AND INFORMATION CONTAINED IN OR DISCLOSED BY THIS DOCUMENT IS CONFIDENTIAL AND PROPRIETARY INFORMATION OF HARDY PROCESS SOLUTIONS INC. AND ALL RIGHTS THEREIN ARE EXPRESSLY RESERVED. BY ACCEPTING THIS MATERIAL THE RECIPIENT AGREES THAT THIS MATERIAL AND THE INFORMATION CONTAINED THEREIN IS HELD IN CONFIDENCE AND IN TRUST AND SHALL NOT BE USED, COPIED, REPRODUCED IN WHOLE OR IN PART, NOR ITS CONTENTS REVEALED IN ANY MANNER TO OTHERS, EXCEPT TO MEET THE SPECIFIC PURPOSE FOR WHICH IT WAS DELIVERED.

ITEM	QTY	0588-0072	OUTLINE DRAWING, LOAD SENSOR, HI HBB01 SERIES	COMMENTS
PARTS LIST				
UNLESS OTHERWISE SPECIFIED DIMENSIONS ARE IN INCHES [MM]		CONTRACT NO.		
TOLERANCES ARE: DECIMALS: .XX = ±.03 .XXX = ±.010 ANGLES: ±0°, 30'		APPROVALS		
MATERIAL		DRAWN R. BILEK	DATE 01-29-07	<b>HARDY</b> PROCESS SOLUTIONS
FINISH		CHECKED P. WYLIE	DATE 01-31-07	
DO NOT SCALE DRAWING		APPROVED T. KOPCZYNSKI	DATE 02-03-07	
		ISSUED K. McNULTY	DATE 02-03-07	
		PRODUCTION	DATE	
		SIZE D	FSCM 21316	DRAWING NO. 0588-0072
		REV. D		FILE NAME: 588072D1.DWG
		SCALE: NONE		SHEET 1 OF 2



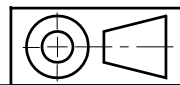


HI HBB01-22 THROUGH HI HBB01-550



HI HBB01-1.1K

DROP-IN CAD FILE VIEWS



<b>HARDY</b> PROCESS SOLUTIONS			
TITLE OUTLINE DRAWING, LOAD SENSOR, HI HBB01 SERIES			
SIZE	FSCM	DRAWING NO.	REV.
D	21316	0588-0072	D
FILE NAME: 588072D1.DWG		SCALE: NONE	SHEET 2 OF 2